

DOOR SCHEDULE

DOOR TYPE AND NOTES

| DOOR NUMBER | DESCRIPTION | SIZE | DOOR DATA | | | | FRAME DATA | | | | | FIRE RATING | HARDWARE | | | | | | | | REMARKS |
|-------------|---------------------------------------|----------------------|-----------|------------------------|------|--------|------------|--------|----------|----------|----------|-------------|----------|---------|--------------|--------|--------|----------------|------------------------|------------|---|
| | | | THICKNESS | MATERIAL | TYPE | FINISH | MATERIAL | FINISH | HEAD | JAMB | SILL | | BUTTS | LOCKSET | EXIT DEVICES | CLOSER | STOP | PUSH/PULL BARS | WEATHERSTRIP THRESHOLD | MISC | |
| FIRST FLOOR | | | | | | | | | | | | | | | | | | | | | |
| 1 | ENTRY DOOR (EXISTING) | 3'-0" X 8'-0" (PAIR) | 1 3/4" | ALUM STILES TEMP GLASS | A-1 | WE1-SG | ALUM | WE1-SG | --- | --- | --- | --- | P1 | L1, L2 | --- | C1 | --- | PP1 | W1, W2, T1 | --- | DOOR & DOOR HARDWARE BY LL. GC TO VERIFY IN FIELD |
| 2 | ELEVATOR VESTIBULE DOOR (EXISTING) | 3'-0" X 7'-0" (PAIR) | 1 3/4" | ALUM STILES TEMP GLASS | A-2 | WE1-SG | ALUM | WE1-SG | --- | --- | --- | --- | P1 | L1, L2 | --- | C1 | --- | PP1 | W1, W2, T1 | --- | DOOR & DOOR HARDWARE BY LL. GC TO VERIFY IN FIELD |
| 3 | SIDE ENTRY DOOR (EXISTING) | 3'-0" X 6'-10" | 1 3/4" | ALUM STILES TEMP GLASS | A-3 | WE1-SG | ALUM | WE1-SG | --- | --- | --- | --- | P1 | L1, L2 | --- | C1 | --- | PP1 | W1, W2, T1 | --- | DOOR & DOOR HARDWARE BY LL. GC TO VERIFY IN FIELD |
| 4 | DOOR TO BASEMENT STOCK ROOM(EXISTING) | 3'-0" X 7'-0" | 1 3/4" | HM | C | WE1-SG | WELD METAL | WE1-SG | E3/A-803 | E1/A-803 | --- | --- | B1 | --- | ED5 | C2 | --- | --- | S2, S4 | M2, M6 | DOOR & DOOR HARDWARE BY LL. GC TO VERIFY IN FIELD |
| 5 | SALES TO STOCKROOM | 3'-0" X 7'-0" | 1 3/4" | HM | C | WE1-SG | WELD METAL | WE1-SG | E3/A-803 | E3/A-803 | E7/A-803 | --- | B1 | L13 | --- | C2 | S1, S2 | --- | --- | M2, M6 | *PRIVATE* SIGN BY SIGN VENDOR |
| 6 | MEN'S TOILET ROOM | 3'-0" X 7'-0" | 1 3/4" | SCW | B-1 | WE1-SG | WELD METAL | WE1-SG | E3/A-803 | E3/A-803 | C7/A-803 | --- | B1 | L4 | --- | C2 | S3 | --- | T4 | M1, M6 | UNDERCUT DOOR 1" |
| 7 | WOMEN'S TOILET ROOM | 3'-0" X 7'-0" | 1 3/4" | SCW | B-1 | WE1-SG | WELD METAL | WE1-SG | E3/A-803 | E3/A-803 | C7/A-803 | --- | B1 | L4 | --- | C2 | S3 | --- | T4 | M1, M6 | UNDERCUT DOOR 1" |
| 8 | MANAGER'S OFFICE | 3'-0" X 7'-0" | 1 3/4" | HM | C | WE1-SG | WELD METAL | WE1-SG | E3/A-803 | E3/A-803 | E5/A-803 | --- | B1 | L5 | --- | C2 | S1, S2 | --- | W4 | M1, M4, M7 | |
| 9 | STOCK EXIT(EXISTING) | 3'-0" X 7'-0" | 1 3/4" | HM | C | WE1-SG | WELD METAL | WE1-SG | E3/A-803 | E1/A-803 | --- | --- | B1 | --- | ED3 | C2 | --- | --- | --- | M1, M6 | NEW HARDWARE ON EXISTING DOOR |
| 10 | ELEVATOR MACHINE ROOM(EXISTING) | 3'-0" X 7'-0" | 1 3/4" | HM | C | WE1-SG | WELD METAL | WE1-SG | E3/A-803 | E1/A-803 | --- | --- | B1 | L11 | --- | C2 | --- | --- | S2, S4 | M1, M6 | DOOR & DOOR HARDWARE BY LL. GC TO VERIFY IN FIELD |

- EXIT DOORS AT STOREFRONT SHALL HAVE SIGN ABOVE STATING "THIS DOOR TO REMAIN UNLOCKED WHEN BUILDING IS OCCUPIED" IN 1" HIGH BLACK VINYL LETTERS ON A SILVER BACKGROUND. LOCKING DEVICE TO BE OF TYPE THAT IS READILY DISTINGUISHABLE AS LOCKED.
- DOORS WITHIN THE PATH OF TRAVEL FOR HANDICAPPED TO BE OPENABLE WITH A SINGLE EFFORT BY LEVER, PANIC BAR OR PUSH / PULL HARDWARE.
- EXIT DOORS TO BE OPENABLE FROM THE INSIDE WITHOUT USE OF A KEY OR ANY SPECIAL KNOWLEDGE OR EFFORT.
- EXTERIOR DOOR CLOSERS TO BE ADJUSTED TO PROVIDE FOR A MAXIMUM EFFORT TO OPERATE OF 15 LBF (1008.1.3). AT FIRE DOOR, USE FORCE ACCEPTABLE BY FIRE MARSHAL.
- INTERIOR DOOR CLOSERS TO BE ADJUSTED TO PROVIDE FOR A MAXIMUM EFFORT TO OPERATE OF 5.0 LBF.
- THRESHOLDS SHALL NOT EXCEED 1/2" IN HEIGHT.
- ALL WOOD AND HM DOORS TO HAVE 1-1/2" PAIR BUTTS PER LEAF.
- BOTH SIDES OF DOOR LEAFS AND FRAMES SHALL BE FINISHED THE SAME, UNLESS OTHERWISE NOTED.
- ALL WOOD DOOR FRAMES AND TRIM SHALL BE AWB OR WIC CUSTOM GRADE UON
- DOORS AND CASED OPENINGS INDICATED ADJACENT TO WALL INTERSECTIONS SHALL BE LOCATED WITH THE EDGE OF FINISH OPENING SIX INCHES FROM THE ADJACENT WALL UNLESS OTHERWISE INDICATED. ALL OTHER DOORS AND CASED OPENINGS SHALL BE CENTERED BETWEEN NEAREST ADJACENT WALL INTERSECTIONS, UNLESS OTHERWISE DIMENSIONED.
- ALL LEGAL EXITS SHALL BE PROVIDED WITH SELF-ILLUM. EXIT SIGNS HAVING 6" LETTERS WITH 3/4" STROKES IN CONTRASTING COLORS.
- CAUTION: HM DOORS TAKE LARGER STRIKES THAN SOLID CORE DOORS.
- HARDWARE CONTRACTOR TO COORDINATE ALL HARDWARE WITH DOORS AND FRAMES AS SPECIFIED, INCLUDING LOCKSETS AND STRIKES.
- ALL MILLWORK IN THE SCOPE OF WORK SHALL BE DELIVERED ON SITE SHOP-PRIMED AND SANDED.
- INSTALL ALL DOORS AND HARDWARE TO MEET ACCESSIBILITY REQUIREMENTS.

HARDWARE NOTES

- ANY SUBSTITUTIONS TO BE SUBMITTED WITH CATALOG FOR ARCH APPROVAL.
- GENERAL CONTRACTOR TO INSTALL LOCKSET WITH CONSTRUCTION CORES.
- SUBMIT THREE (3) COPIES OF HARDWARE LIST AND CUT SHEETS. CUT SHEETS TO CLEARLY INDICATE HARDWARE TO BE USED.
- CONTRACTOR TO ORDER ALL HARDWARE IMMEDIATELY UPON APPROVAL OF HARDWARE LIST.
- GC IS RESPONSIBLE TO BID HARDWARE THAT CONFORMS TO REQUIREMENTS OF THE JURISDICTIONAL CODE AUTHORITIES.
- WHERE OPENINGS ARE NOTED WITH AN HOURLY FIRE RESISTANCE RATING, PROVIDE HARDWARE COMPONENTS LABELED BY UNDERWRITERS LABORATORY, OR OTHER TESTING LABORATORY APPROVED BY THE LOCAL CODE AUTHORITIES, TO MEET THE HOURLY FIRE RATING NOTED.
- HARDWARE SHALL CONFORM TO NFPA 80 FOR FIRE RATED CLASS INDICATED.

HARDWARE NOTES

ALL LOCKS AND CYLINDERS ARE TO BE COMPATIBLE WITH BEST 7-PIN KEY SYSTEM

- BUTTS/PIVOTS**
- B1 HAGER HINGES BB1279 4 1/2" X 4 1/2" - US26D
 - B2 MCKINNEY HINGES TA2714-NRP 4 1/2" X 4 1/2" - US26D
 - B3 SOSS HINGES 218 - US26D
 - B4 CONTINUOUS GEARED HINGE (HURRICANE ZONE STORES)
 - P1 RIXSON 195 PIVOT SET W/ ONE M19 INTERMEDIATE PIVOT - FOR DOORS UP TO 10'-0" TALL TO PROVIDE 8.5 LB MAX OPENING FORCE (5.0 LB IN CALIFORNIA)
 - P2 RIXSON 195 PIVOT SET W/ TWO M19 INTERMEDIATE PIVOTS - FOR DOORS 10'-0" AND TALLER TO PROVIDE 8.5 LB MAX OPENING FORCE (5.0 LB IN CALIFORNIA)

- LOCKET**
- L1 ADAMS RITE 3-POINT DEADLOCK - MS 1850/4015/4016 W/ EXIT INDICATOR 4089
 - L2 BEST CYLINDER - MORTISE TYPE WITH THUMBTURN AND STRIKE, TO BE COMPATIBLE WITH BEST 7-PIN, CORE - FINISH: 622
 - L3 SCHLAGE PASSAGE ND10S - RHO - 626
 - L4 SCHLAGE PRIVACY ND40S-RHO-626
 - L5 SCHLAGE LOCKSET ND53BD - RHO - 626
 - L6 BEST RIM CYLINDER 1E72 (AT OUTSIDE TRIM OF ACTIVE DOOR) - 626
 - L7 DETEX EA500S1 (FOR SINGLE DOOR), DETEX EA500S2 (FOR DOUBLE DOORS) BATTERY POWERED EXIT ALARM
 - L8 BEST MORTISE CYLINDER 1E74 - 62 (FOR USE W/ L7)
 - L9 IVES ROLLER LATCH 336 - 626
 - L10 PRECISION OUTSIDE LEVER TRIM 3903D - 32D
 - L11 SCHLAGE LOCKSET ND80BD - RHO - 626
 - L12 IVES FLUSH BOLTS FB458 - 626
 - L13 SCHLAGE AL 10S X SATURN - 26D
 - L14 SCHLAGE LOCKSET ND25D - RHO - 626
 - L15 BEST CORE FOR COILING DOOR SWITCH

- EXIT DEVICES**
- ED1 PRECISION FIRE RATED EXIT DEVICE (ACTIVE DOOR) FL2203 ALK X 1703A X RHR - 630
 - ED2 PRECISION FIRE RATED EXIT DEVICE (INACTIVE DOOR) FL2203 ALK X 1701 X LHR - 630
 - ED3 PRECISION EXIT DEVICE FL2101 ALK X 1701 (HANDED RHR OR LHR) - ALUM
 - ED4 PRECISION EXIT DEVICE FL2201 X 1701 (HANDED RHR OR LHR) - ALUM
 - ED5 PRECISION EXIT DEVICE FL2103 X 1703 (HANDED RHR OR LHR) - ALUM
 - ED6 PRECISION EXIT DEVICE FL2101 X 1701 (HANDED RHR OR LHR) - ALUM
 - ED7 PRECISION EXIT DEVICE FL2114 X 4914 (HANDED RHR OR LHR) - ALUM
 - ED8 PRECISION EXIT DEVICE FL2203 EXQ X 1703

- CLOSER**
- C1 LCN 2034 X ALUM (MT FOR 180 DEGREES) OVERHEAD CLOSERS WITH HOLD OPEN
 - C2 NORTON CLOSER 8501 - ALUM
 - C3 NORTON ALUMINUM CLOSER 8501-BF X S/B - ALUM
 - C4 LCN CLOSER 4041PA - ALUM
 - C5 RIXSON FLOOR CLOSERS WITH HOLD OPEN - 40 X PH - TO PROVIDE 8.5 LB MAX OPENING FORCE (5.0 LB IN CALIFORNIA)
 - C6 KAWNEER HUSKY-II / SAM-II (FLORIDA STORES)

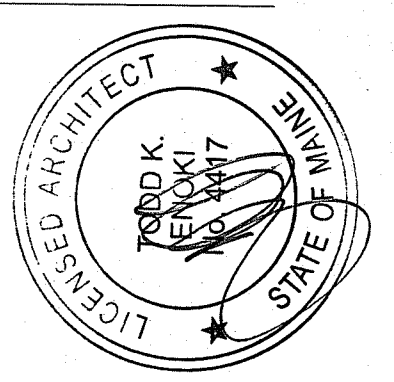
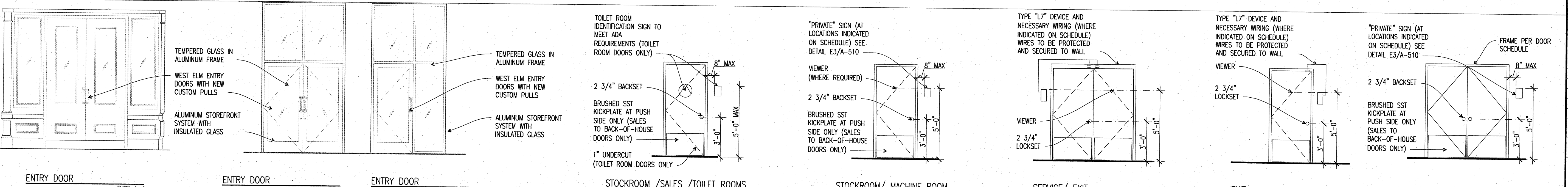
- STOP**
- S1 ROCKWOOD DOOR STOP - 440 - US26D
 - S2 BALDWIN KICK DOWN DOOR STOP 4105 - 626
 - S3 IVES DOME STOP X RISER FS13 X R14 - 626
 - S4 GLYNN-JOHNSON OVERHEAD STOP 100S - 626
 - S5 TICE RS2 FLOOR HOLDERS
 - S6 MAGNETIC HOLD OPEN

- PUSH/PULL BARS**
- PP1 CUSTOM PULL, ON BOTH SIDES OF DOOR - 3D STUDIO CONTACT: JOE FARAS PH: 510.220.0220
 - PP2 HAFELE PULL 151.01.729 - 626

- WEATHERSTRIP/THRESHOLDS**
- W1 BOTTOM SWEEPS BY STOREFRONT DOOR MANUFACTURER
 - W2 WEATHERSTRIP BY STOREFRONT DOOR MANUFACTURER
 - W3 DOOR SWEEP
 - W4 PEMKO SMOKE SEAL S88W-21' - WHITE
 - T1 PEMKO THRESHOLD - 176D 1/2" X 7"
 - T2 NGP THRESHOLD - 425A
 - T3 KAWNEER THRESHOLD STANDARD 1/2" X 4" ALUMINUM MILL FINISH (FLORIDA STORES)
 - T4 MARBLE THRESHOLD
 - T5 PEMKO THRESHOLD - 1716 1/2" X 6"

- MISC**
- M1 ROCKWOOD KICKPLATE 10" X 2" LESS THAN TOTAL WIDTH OF DOOR - 630
 - M2 ROCKWOOD KICKPLATE 30" X 2" LESS THAN TOTAL WIDTH OF DOOR - 630
 - M3 VES LOCK GUARD LG1 - US32D
 - M4 IVES VIEWER U700B26D - 626
 - M5 PRECISION DOUBLE DOOR STRIKE
 - M6 IVES SILENCERS SR65/SR64
 - M7 COAT HOOK - LIBERTY 129849

DOOR TYPES



CALLISONRTKL
A DESIGN CONSULTANCY OF ARCADIS
CALLISONRTKL, INC.
www.callisonrtkl.com

west elm
Downtown Portland
164 Middle Street
Portland, ME 04101
PROJECT #006-160335.00

| ISSUED / REVISED | DATE |
|---------------------|----------|
| PRELIMINARY SET | 09/08/16 |
| LL COORDINATION SET | 11/08/16 |
| LL/PERMIT SET | 11/21/16 |

DOOR SCHEDULE, NOTES, HARDWARE & DOOR TYPES

A-003